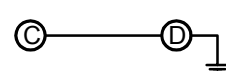
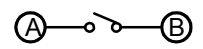
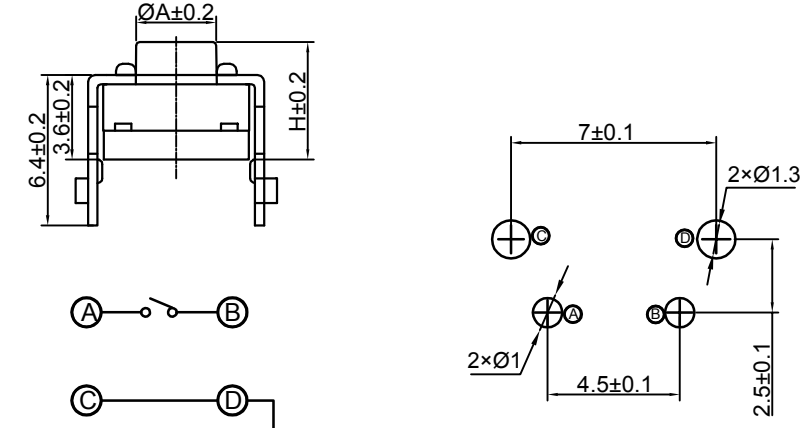
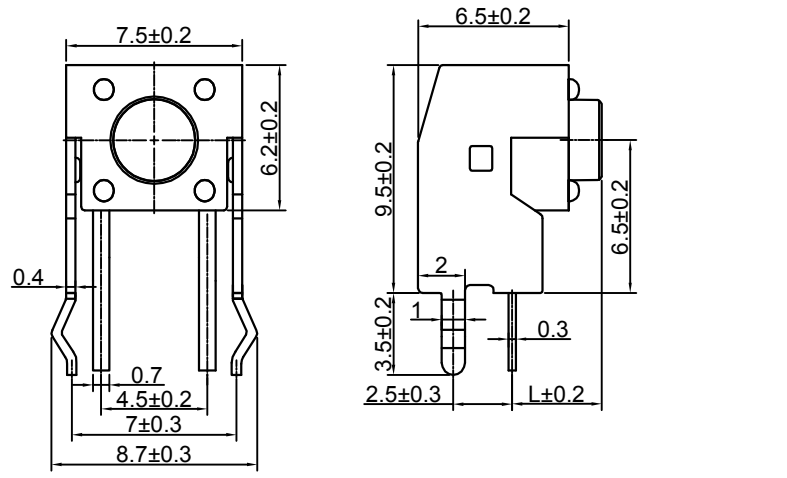




Switch drawings

Dimensional tolerance is ± 0.2mm

Number Description



CIRCUIT DIAGRAM

P.C.B. LAYOUT

H	4.3	4.5	4.8	5	5.5	6	6.4	6.5	6.6	7	7.3	7.5	8
A	3.4	3.4	3.4	3.5	3.2	3.2	3	3.2	3.1	3.2	3.2	3.2	3.2
L	3.15	3.35	3.65	3.85	4.35	4.85	5.25	5.35	5.45	5.85	6.15	6.35	6.85
H	8.5	8.8	9	9.5	9.7	9.9	10	10.3	10.5	11	11.5	12	
A	3.2	3.1	3.1	3.2	3.1	3.2	3.2	3.2	3	3.1	3.2	3.2	
L	7.35	7.65	7.85	8.35	8.55	8.75	8.85	9.15	9.35	9.85	10.35	10.85	

THD version tact switch serial number B=GP,PPA Base material B=GP,PPA Handle material A=Black Handle color

TSA06242-

Switch height (mm)		
043=4.3	070=7.0	099=9.9
045=4.5	073=7.3	100=10.0
048=4.8	075=7.5	103=10.3
050=5.0	080=8.0	105=10.5
055=5.5	085=8.5	110=11.0
060=6.0	088=8.8	115=11.5
064=6.4	090=9.0	120=12.0
065=6.5	095=9.5	
066=6.6	097=9.7	

Strength (lifespan)
8=250gf

Cover (Salt spray time)
3=Stainless Steel with Silver cladding

Contact

3=SUS silvering

SPECIFICATIONS	
Function:	Momentary action
Contact Arrangement:	SPST, Normally Open
Termination:	THD version
Environmental	
Operating Temperature:	-25 ~ +70°C
Relative Humidity:	(40°C) ≤70%
Electrical	
Contact Rating:	50mA 12V DC
Dielectric Strength:	250VAC /1min
Contact Resistance:	100mΩMax.
Insulation Resistance:	100MΩMin.
Travel:	0.25±0.1mm
Mechanical	
Actuation Force:	Optional
Life Expectancy:	Optional

Materials	
1.Terminal:	Optional
2. Holder:	Optional
3.Contact:	Optional
4. Stem:	Optional
5. Cover:	Optional

