

Push Latch Switch

P/N:PR-08A

Mechanical

Actuation Force: 200gf~600gf
Life Expectancy: 15,000 Operations

Environmental

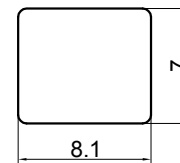
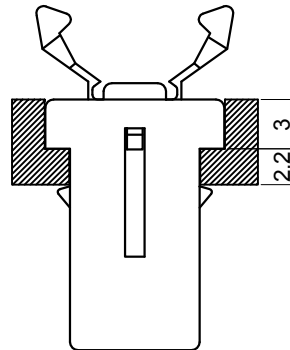
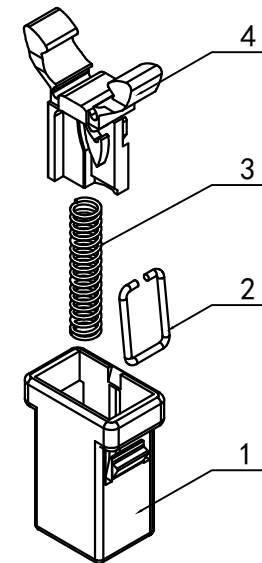
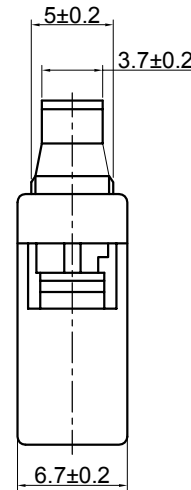
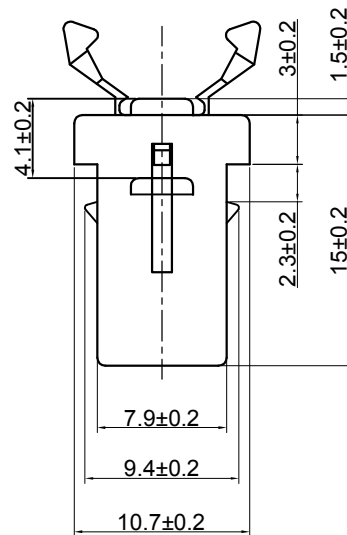
Operating Temperature: -25~+70°C
Relative Humidity: (40°C)≤70%RH

Materials

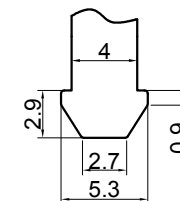
4.Y-shape Key: Black GP.PA66
3.spring: stainless steel wire
2.pothook: stainless steel wire
1.shell: Black POM

Packaging

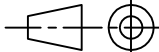
Bulk Package: Plastic bag
Inner Package: Carton
Outer Package: Carton



Refer to the specifications for mounting holes



Latch reference specifications

VERSION		PROJECTION	DESIGNED	JiaCheng Yu
KH14FE22E			CHECKED	ShuQing Zhu
SCALE	SIZE	 Dimensions are shown:mm(inches)	APPROVED	Johan Xu
5:1	A4		2024.07.31	