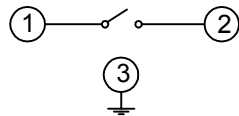
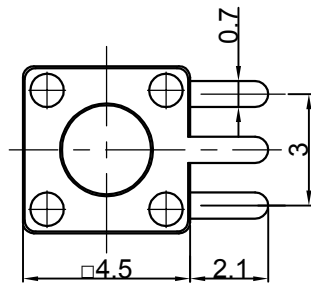
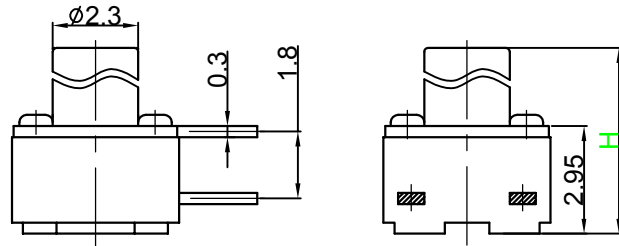


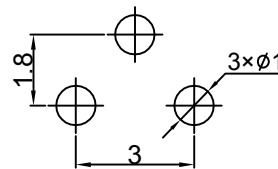
## Switch drawings

Dimensional tolerance is ± 0.2mm

## Number Description

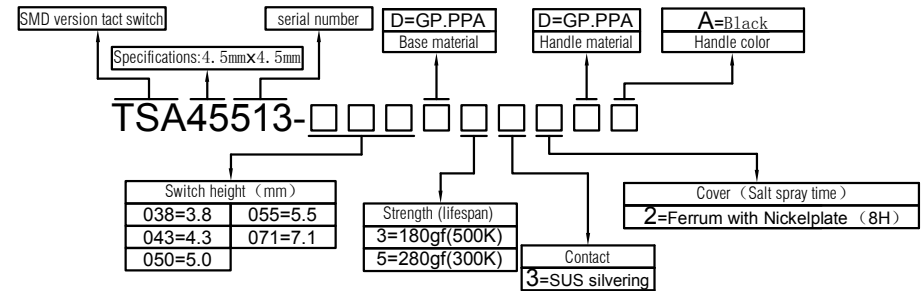


CIRCUIT DIAGRAM



P.C.B. LAYOUT

H	3.8	4.3	5.0	5.5	7.1
---	-----	-----	-----	-----	-----



## SPECIFICATIONS

Funtion:	Momentary action
Contact Arrangement:	SPST, Normally Open
Termination:	SMD version

## Environmental

Operating Temperature:	-25 ~ +70 °C
Relative Humidity:	(40 °C) ≤70%

## Electrical

Contact Rating:	50mA 12V DC
Dielectric Strength:	250VAC /1min
Contact Resistance:	100mΩMax.
Insulation Resistance:	100MΩMin.
Travel:	0.2±0.1mm

## Mechanical

Actuation Force:	Optional
Life Expectancy:	Optional

## Materials

1.Stem:	Optional
2. Cover:	Optional
3. Contact:	Optional
4. Holder:	Optional
5. Terminal:	Ag plating Au plating

