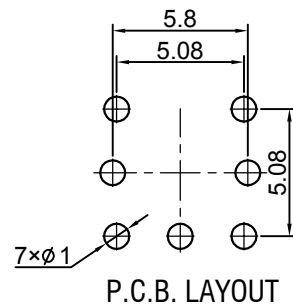
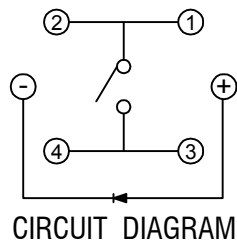
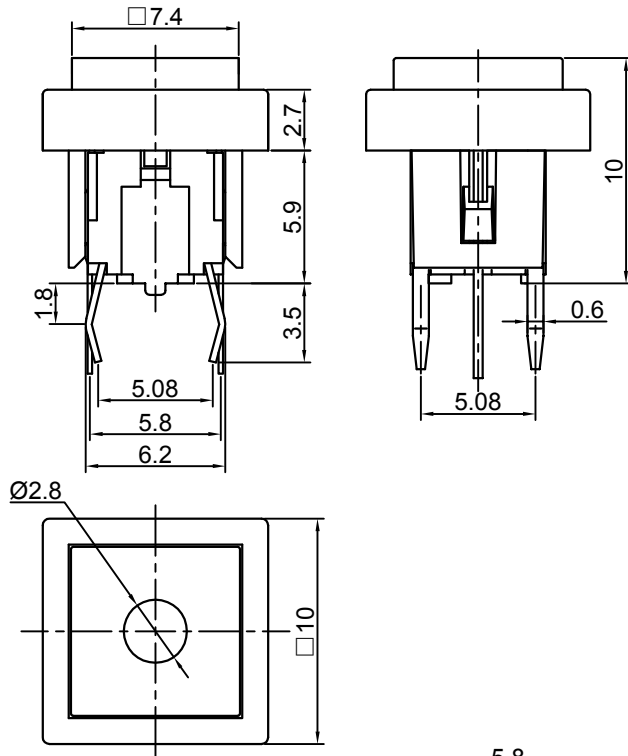


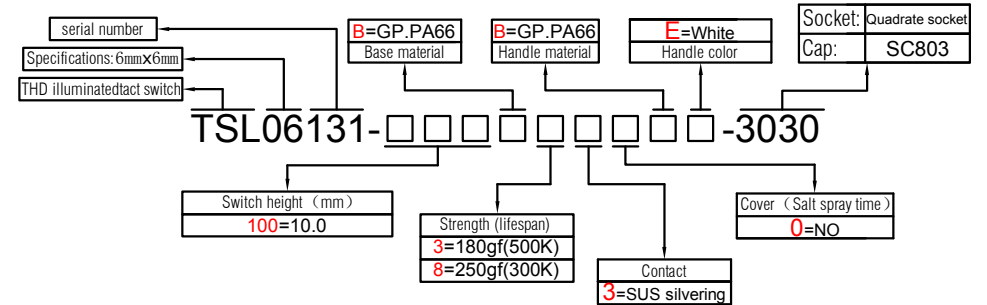


## Switch drawings

Dimensional tolerance is ± 0.2mm



## Number Description



## SPECIFICATIONS

|                      |                     |
|----------------------|---------------------|
| Function:            | Momentary action    |
| Contact Arrangement: | SPST, Normally Open |
| Termination:         | THD illuminated     |

## Environmental

|                        |              |
|------------------------|--------------|
| Operating Temperature: | -25 ~ +70 °C |
| Relative Humidity:     | (40 °C) ≤70% |

## Electrical

|                        |              |
|------------------------|--------------|
| Contact Rating:        | 50mA 12V DC  |
| Dielectric Strength:   | 250VAC /1min |
| Contact Resistance:    | 100mΩMax.    |
| Insulation Resistance: | 100MΩMin.    |
| Travel:                | 0.25±0.1mm   |

## Mechanical

|                  |          |
|------------------|----------|
| Actuation Force: | Optional |
| Life Expectancy: | Optional |

## Materials

|             |                          |
|-------------|--------------------------|
| 1.Cap:      | Nonoptional              |
| 2.Socket:   | Nonoptional              |
| 3.LED:      | Optional                 |
| 4.Stem:     | Optional                 |
| 5.Contact:  | Optional                 |
| 6.Holder:   | Optional                 |
| 7.Terminal: | Ag plating<br>Au plating |

